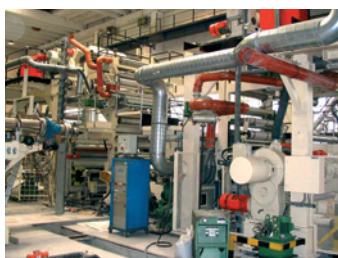




Edition: 08 | Automation/SH

Control and drive modernisation of an extrusion coating system

At the end of 2006, Mehler Engineering + Service GmbH undertook a project to modernise an extrusion coating system, originally built in 1980, including PLC technology, process visualisation, drive regulation, controls and pneumatics in a single step, with an on-site period of 3 weeks. The whole project, including engineering and production, took just 18 weeks.



System Component	1980 Component/Function	2007 Modernisation
PLC used	Siemens S5	Siemens S7
Process visualisation	None	InTouch or WinCC flexible
Drive controls	Analog technology	Digital via field bus
Drive technology	DC drives	Frequency-regulated 3-phase motors
Extruder control	DOS computer	PLC and process visualisation
Failure reporting	PLC, group signal	Process visualisation via PLC, detailed plain text messages
Pneumatics	Custom-built solution	Standard equipment

MES | *systems*[®]
... more than drying systems

MES | *comtec*[®]
... more than pilot installations

MES | *thermsol*[®]
... more than heating systems

MES | *process*[®]
... more than control engineering

MES | *master*[®]
... more than plant relocation

